

PharmaLine Aseptic Sampling Valve

DESCRIPTION

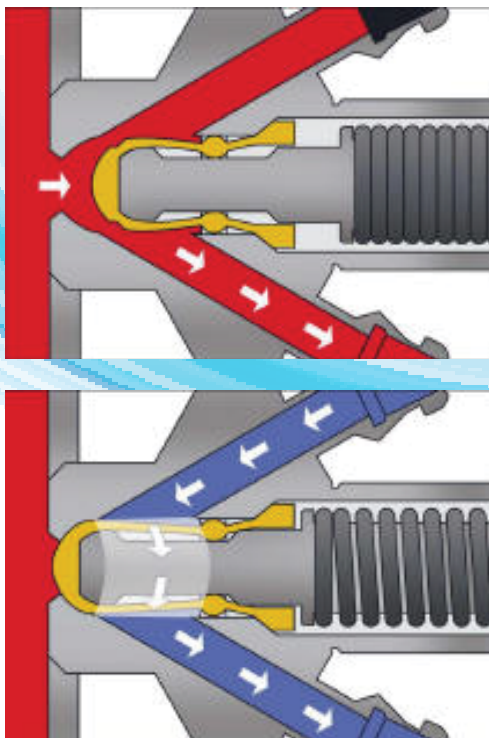
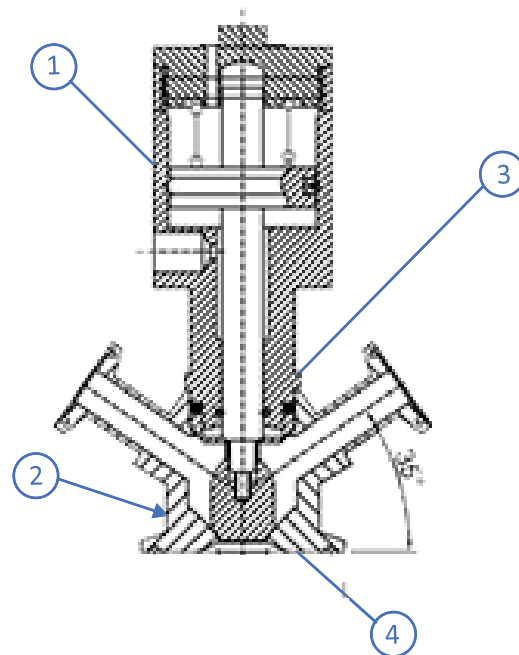
Aseptic Sampling Valve is designed for sterilization before and after each sampling. The manual valve is opened by rotating the handle (adjustable valve) or by activating the lever (on/off valve). The stem and the membrane are then retracted, allowing liquid to pass. Using the reverse procedure the built-in spring closes the valve, keeping the channel between the hose pieces open for sterilization. If using steam a small pressure relief valve (optional) on the outlet is recommended.

Aseptic Sampling valve consists of three parts, a valve body, a valve head and a membrane. The rubber membrane is placed on the stem of the valve head and works as a stretchable plug. The valve bodies and valve heads are interchangeable. The valve body is supplied with either welding end for tank, welding end for pipe, with clamp end or with thread.



ADDITIONAL INFO

- Size Range:** 3/4" - 1 1/2"
- Temperature Range:** -35° C to 400° C
- Body Materials:** Stainless Steel
- Seat Materials:** Silicone (optional for PTFE, EPDM, Fluorine rubber)
- Applications:** Food, Beverage, Pharmaceutical, Chemical industries



COMPONENTS & MATERIALS		
POS.	Designation	Material
1	Pneumatic Head	304 SS / 316 SS
2V	Valve Body	304 SS / 316 SS
3	Seal Ring	Silicon / Food Grade Buna-N / Food Grade PTFE / Food Grade EPDM / Food Grade
4	Bellow	PTFE

SIZE	ID	OD	D	D2	ID2	E	F	O	W	Ordering Code
	mm	mm	mm	mm	mm	mm	mm	mm	mm	
1/2"	6	19.05	25.2	25.2	5				38.5	V015CS3-1008-A54
3/4"	6	19.05	25.2	25.2	5				38.5	V020CS3-1008-A54
1"	11.7	38.1	50.5	25.4	9.2	85	95	44	53.7	V025CS3-1008-A54
1 1/2"	11.7	38.1	50.5	25.4	9.2	85	95	44	53.7	V038CS3-1008-A54

Available Types

Type A

Type B

Type C

Fig. 1. Dimensions - valve.

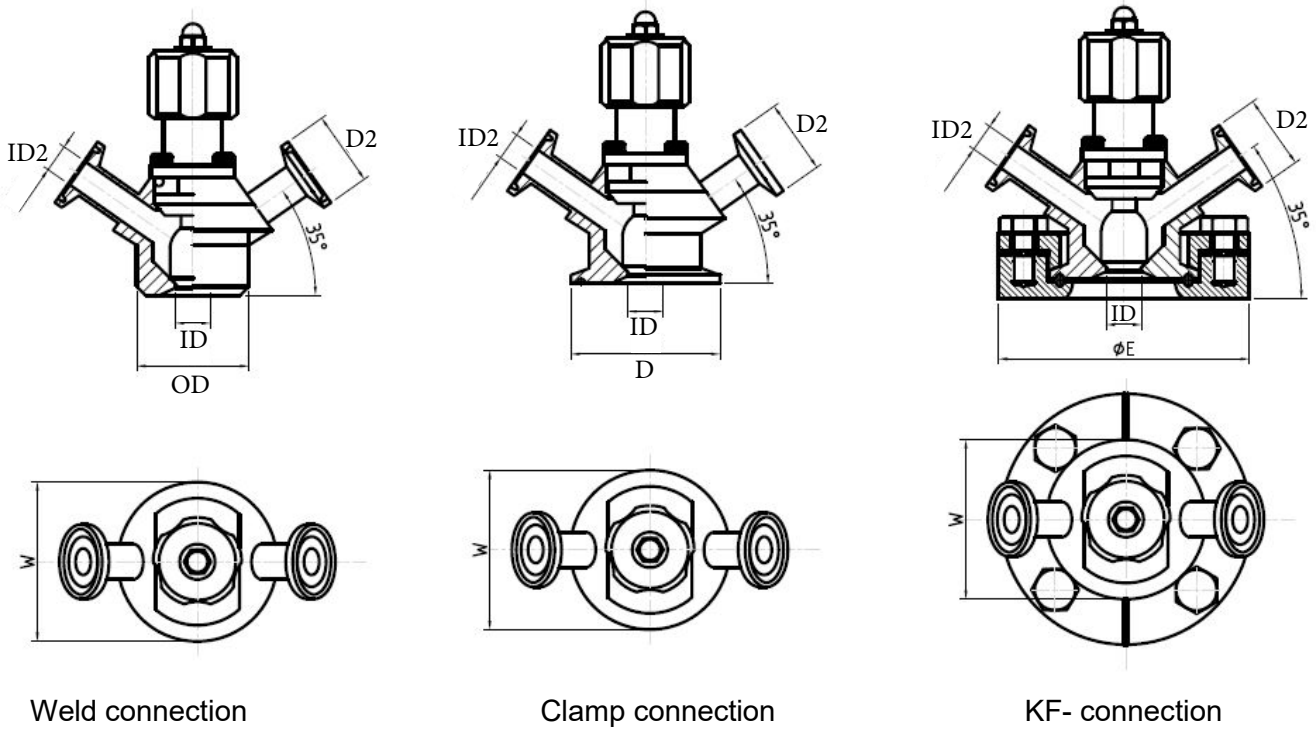
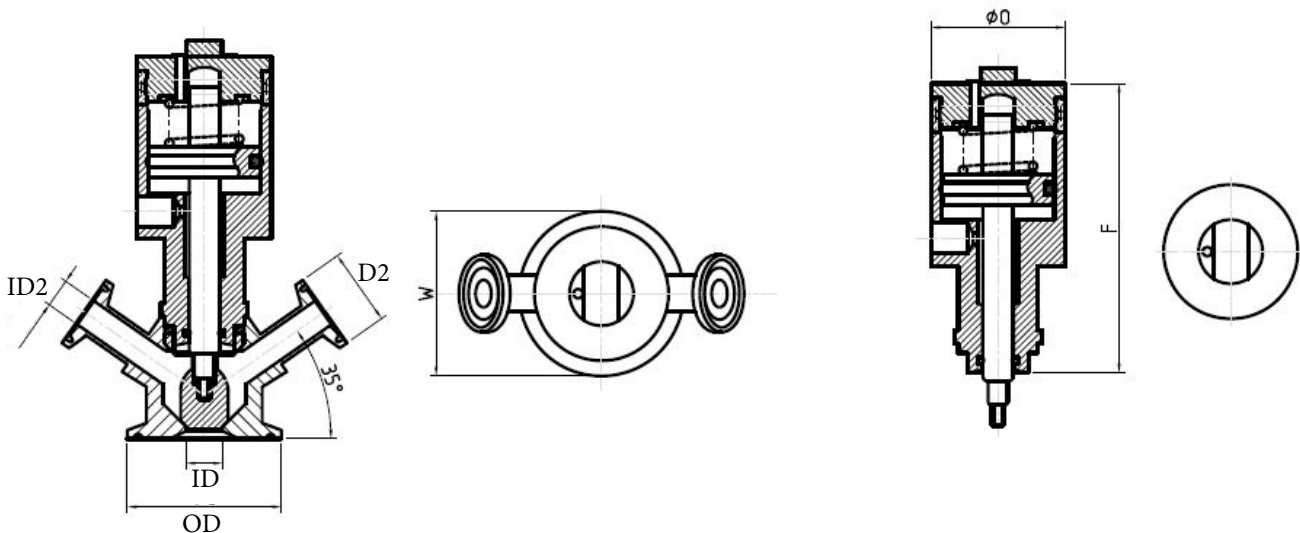


Fig. 2. Dimensions - actuator



- There are three series of KSV sampling, G series regular sampling valve, S series sterile sampling valve, and SS sterile sampling valve.
- G series by rotating the hand wheel sampling valve is made of stainless steel, durable. Health type design, suitable for just sampling, don't need the sterilization conditions valve Connection with other parts have a clamp or welding type, sampling mouth is welding type or hose connection.
- S series and SS aseptic sampling valve adopts aseptic design, POM material rotate hand wheel, either Can guarantee the strength and the hot sweet design.
- S and SS two series of aseptic sampling valve is very suitable for food, pharmaceutical and other must be strictly controlled. The operation condition of the bacteria, because it conform to the requirements of the sanitary production at the same time. In production, sterile sampling valve can fully under the condition of not interrupt processing to ensure continuous random aseptic sampling.
- SS series can be performed steam sterilization before and after sampling, effectively prevent the possibility of contamination and the valve itself bacteria infection.
- KSV aseptic sampling valve body connection structure can design based on the assembling surface , junction surface, welding or clamp type is optional. (can be based on customer demand welding on the tanks, welding on the pipe or use another chuck connection joints. S and SS series KSV aseptic sampling valve outlet pipe connection has a cassette, pagoda, hose type, etc.)



KSV - S aseptic sampling valve

KSV - SS sterile sampling valve can be sterilized

KSV - S series

Low viscosity: 0-8000CP, particle diameter < 8mm

Application: brew, dairy, pharmaceutical and biochemical industry.

KSV - SS series Aseptic sampling valve with sterilization

High viscosity: 0-2000CP, grain diameter < 8mm

Application: brew, dairy, pharmaceutical and biotechnology industry.

Technical Parameters

- Flow components material: 316L SS
- Other steel: 304L SS
- Seal material: PTFE/EPDM
- Handle material: POM/SS
- Surface finish: inner surface EP Ra≤0.5μm
- Outside surface MP: Ra≤0.8μm
- Maxi medium pressure 0.6: Mpa
- Min allowed pressure: 0.04 Mpa
- Working temp: -20°C~ 120°C
- Sterilization Temperature: ≤ 121°C Max 20min



S Series Sampling Valves

Main Connection: Weld

Sampling Connection: Weld

Aseptic sampling valve	Diameter and connection method		Sampling and connection method		Sample viscosity	Sampling particles diameter
	Diameter	Connection method	Diameter	Connection method		
V020WS3-	DN20	Weld	DN6		0 ~ 200cp	<2mm
V025WS3-W01***	DN25	Weld	DN15	Weld	0 ~ 2000cp	<4mm
V040WS3-W01***	DN40	Weld	DN15	Weld	0 ~ 5000cp	<6mm
V050WS3-W01***	DN50	Weld	DN20	Weld	0 ~ 8000cp	<8mm

Main Connection: Weld

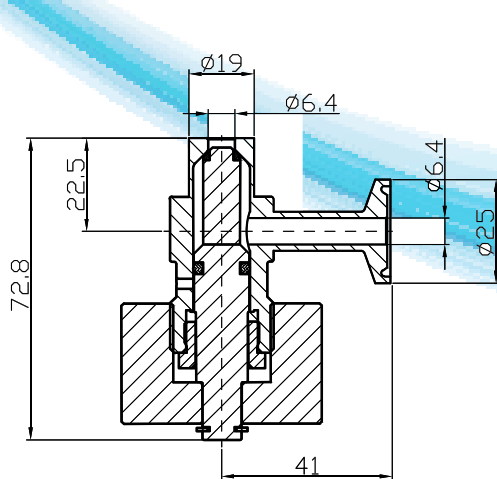
Sampling Connection: Clamp

Aseptic sampling valve	Diameter and connection method		Sampling and connection method		Sample viscosity	Sampling particles diameter
	Diameter	Connection method	Diameter	Connection method		
V020WS3-201***	DN20	Weld	DN6	Clamp	0 ~ 200cp	<2mm
V025WS3-101***	DN25	Weld	DN15	Clamp	0 ~ 2000cp	<4mm
V040WS3-101***	DN40	Weld	DN15	Clamp	0 ~ 5000cp	<6mm
V050WS3-101***	DN50	Weld	DN20	Clamp	0 ~ 8000cp	<8mm

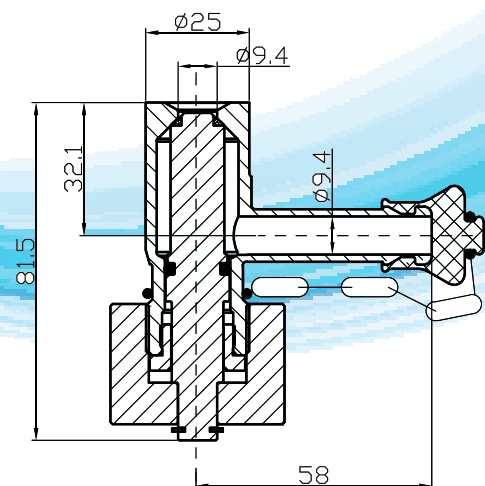
Main Connection: Weld

Sampling Connection: Pagoda

Aseptic sampling valve	Diameter and connection method		Sampling and connection method		Sample viscosity	Sampling particles diameter
	Diameter	Connection method	Diameter	Connection method		
V020WS3-P01***	DN20	Weld	DN6	Pagoda	0 ~ 200cp	<2mm
V025WS3-P01***	DN25	Weld	DN15	Pagoda	0 ~ 2000cp	<4mm
V040WS3-P01***	DN40	Weld	DN15	Pagoda	0 ~ 5000cp	<6mm
V050WS3-P01***	DN50	Weld	DN20	Pagoda	0 ~ 8000cp	<8mm



S6 - Weld (S6-W-C)



S9 - Weld (S9-W-B)

Main Connection: Weld
Sampling Connection: Weld

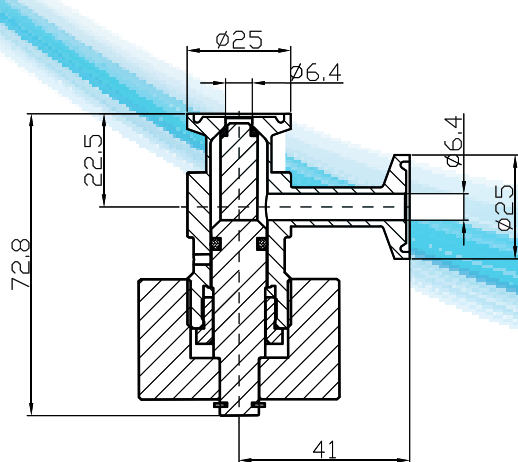
Aseptic sampling valve	Diameter and connection method		Sampling and connection method		Sample viscosity	Sampling particles diameter
	DN	Method	DN	Method		
V020CS3-	DN20	Weld	DN6		0 ~ 200cp	<2mm
V025CS3-W01***	DN25	Weld	DN15	Weld	0 ~ 2000cp	<4mm
V040CS3-W01***	DN40	Weld	DN15	Weld	0 ~ 5000cp	<6mm
V050CS3-W01***	DN50	Weld	DN20	Weld	0 ~ 8000cp	<8mm

Main Connection: Weld
Sampling Connection: Clamp

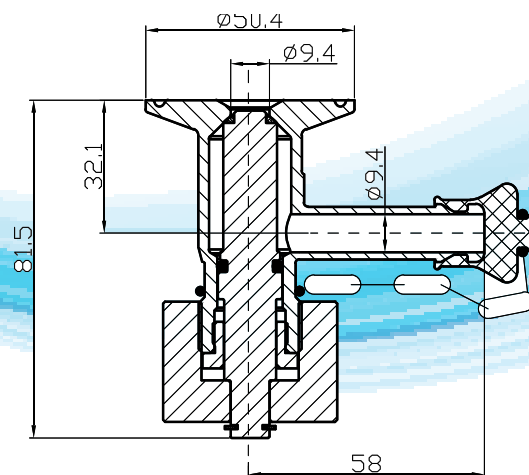
Aseptic sampling valve	Diameter and connection method		Sampling and connection method		Sample viscosity	Sampling particles diameter
	DN	Method	DN	Method		
V020CS3-201***	DN20	Weld	DN6	Clamp	0 ~ 200cp	<2mm
V025CS3-101***	DN25	Weld	DN15	Clamp	0 ~ 2000cp	<4mm
V040CS3-101***	DN40	Weld	DN15	Clamp	0 ~ 5000cp	<6mm
V050CS3-101***	DN50	Weld	DN20	Clamp	0 ~ 8000cp	<8mm

Main Connection: Weld
Sampling Connection: Pagoda

Aseptic sampling valve	Diameter and connection method		Sampling and connection method		Sample viscosity	Sampling particles diameter
	DN	Method	DN	Method		
V020CS3-P01***	DN20	Weld	DN6	Pagoda	0 ~ 200cp	<2mm
V025CS3-P01***	DN25	Weld	DN15	Pagoda	0 ~ 2000cp	<4mm
V040CS3-P01***	DN40	Weld	DN15	Pagoda	0 ~ 5000cp	<6mm
V050CS3-P01***	DN50	Weld	DN20	Pagoda	0 ~ 8000cp	<8mm



S6 - Clamp (S6-C-C)



S9 - Clamp (S9-C-B)

SS Series Sampling Valves

Main Connection: Weld
Sampling Connection: Weld

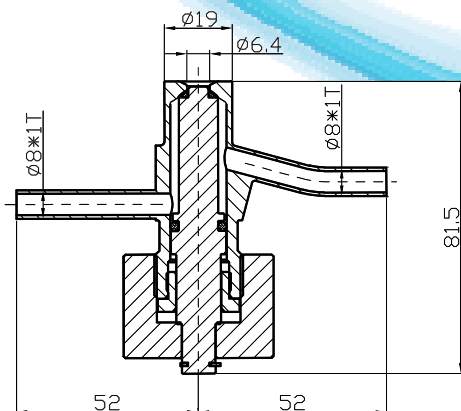
Aseptic sampling valve	Diameter and connection method		Sampling and connection method		Sample viscosity	Sampling particles diameter
	Diameter	Connection method	Diameter	Connection method		
V020WS3-	DN20	Weld	DN6	Weld	0 ~ 200cp	<2mm
V025WS3-W02***	DN25	Weld	DN15	Weld	0 ~ 2000cp	<4mm
V040WS3-W02***	DN40	Weld	DN15	Weld	0 ~ 5000cp	<6mm
V050WS3-W02***	DN50	Weld	DN20	Weld	0 ~ 8000cp	<8mm

Main Connection: Weld
Sampling Connection: Clamp

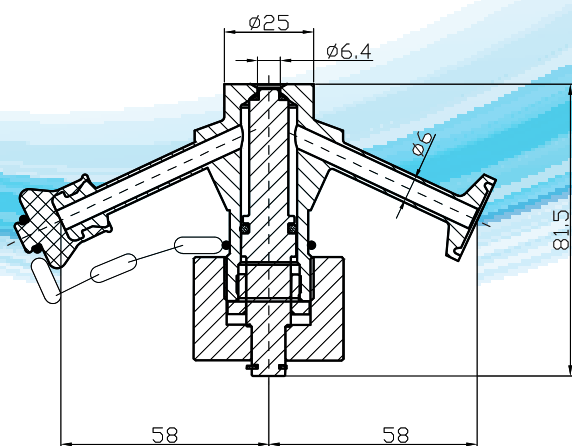
Aseptic sampling valve	Diameter and connection method		Sampling and connection method		Sample viscosity	Sampling particles diameter
	Diameter	Connection method	Diameter	Connection method		
V020WS3-202***	DN20	Weld	DN6	Clamp	0 ~ 200cp	<2mm
V025WS3-102***	DN25	Weld	DN15	Clamp	0 ~ 2000cp	<4mm
V040WS3-102***	DN40	Weld	DN15	Clamp	0 ~ 5000cp	<6mm
V050WS3-102***	DN50	Weld	DN20	Clamp	0 ~ 8000cp	<8mm

Main Connection: Weld
Sampling Connection: Pagoda

Aseptic sampling valve	Diameter and connection method		Sampling and connection method		Sample viscosity	Sampling particles diameter
	Diameter	Connection method	Diameter	Connection method		
V020WS3-P02***	DN20	Weld	DN6	Pagoda	0 ~ 200cp	<2mm
V025WS3-P02***	DN25	Weld	DN15	Pagoda	0 ~ 2000cp	<4mm
V040WS3-P02***	DN40	Weld	DN15	Pagoda	0 ~ 5000cp	<6mm
V050WS3-P02***	DN50	Weld	DN20	Pagoda	0 ~ 8000cp	<8mm



SS6 - Weld (SS6-W-W)



SS6 - Weld (SS6-W-BC)

Main Connection: Weld
Sampling Connection: Weld

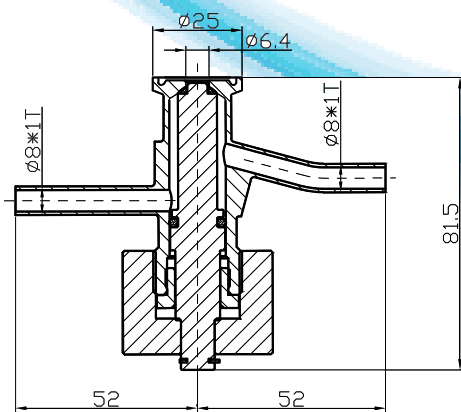
Aseptic sampling valve	Diameter and connection method		Sampling and connection method		Sample viscosity	Sampling particles diameter
	Diameter	Connection method	Diameter	Connection method		
V020CS3-	DN20	Weld	DN6		0 ~ 200cp	<2mm
V025CS3-W03***	DN25	Weld	DN15	Weld	0 ~ 2000cp	<4mm
V040CS3-W03***	DN40	Weld	DN15	Weld	0 ~ 5000cp	<6mm
V050CS3-W03***	DN50	Weld	DN20	Weld	0 ~ 8000cp	<8mm

Main Connection: Weld
Sampling Connection: Clamp

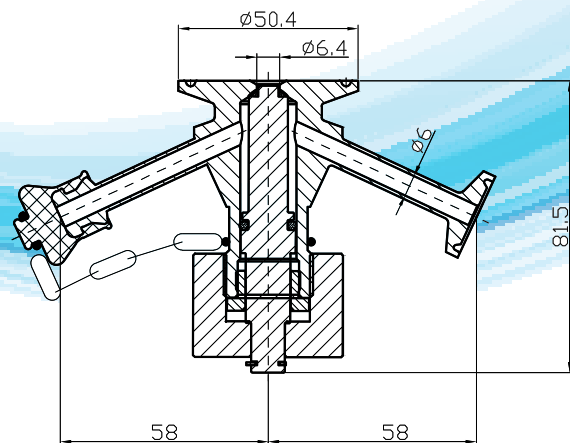
Aseptic sampling valve	Diameter and connection method		Sampling and connection method		Sample viscosity	Sampling particles diameter
	Diameter	Connection method	Diameter	Connection method		
V020CS3-203***	DN20	Weld	DN6	Clamp	0 ~ 200cp	<2mm
V025CS3-103***	DN25	Weld	DN15	Clamp	0 ~ 2000cp	<4mm
V040CS3-103***	DN40	Weld	DN15	Clamp	0 ~ 5000cp	<6mm
V050CS3-103***	DN50	Weld	DN20	Clamp	0 ~ 8000cp	<8mm

Main Connection: Weld
Sampling Connection: Pagoda

Aseptic sampling valve	Diameter and connection method		Sampling and connection method		Sample viscosity	Sampling particles diameter
	Diameter	Connection method	Diameter	Connection method		
V020CS3-P03***	DN20	Weld	DN6	Pagoda	0 ~ 200cp	<2mm
V025CS3-P03***	DN25	Weld	DN15	Pagoda	0 ~ 2000cp	<4mm
V040CS3-P03***	DN40	Weld	DN15	Pagoda	0 ~ 5000cp	<6mm
V050CS3-P03***	DN50	Weld	DN20	Pagoda	0 ~ 8000cp	<8mm

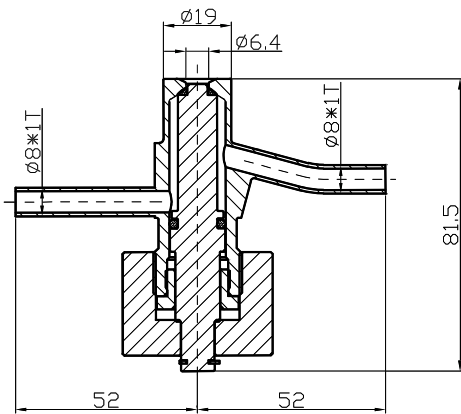


SS6 - Clamp (SS6-C-WW)

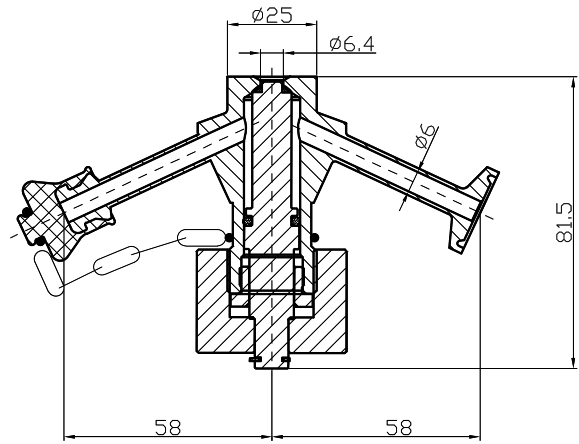


SS6 - Clamp (SS6-C-BC)

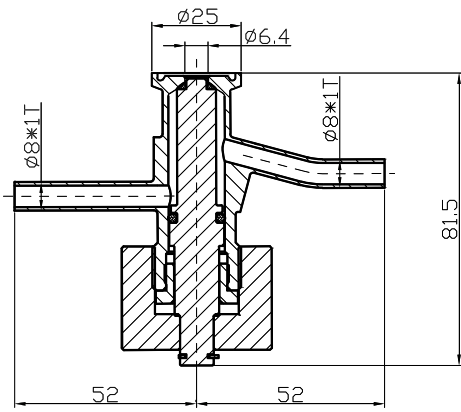
Can be sterilized aseptic sampling valve



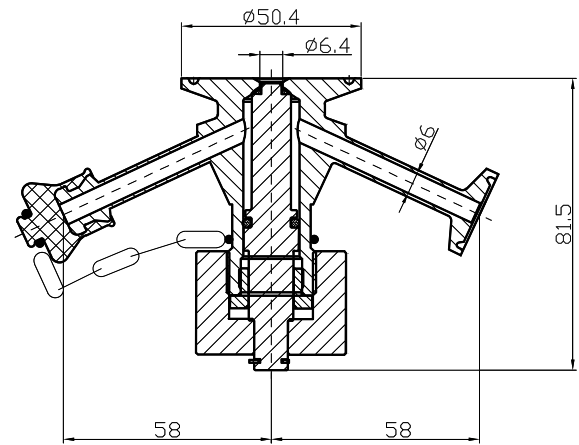
SS6 - Weld (SS6-W-W)



SS6 - Weld (SS6-W-BC)



SS6 - Clamp (SS6-C-WW)



SS6 - Clamp (SS6-C-BC)